



ColorCloud

HAMBURG

15. - 17. APRIL 2026

Microsoft Foundry: Make AI work for your business

Ema Myrtollari
Elvira Cekrezi



ColorCloud



Ema Myrtollari

Solution Architect, Linksoft

Albania



#ColorCloudSpeaker 



ColorCloud

www.color.cloud

[#ColorCloud2026](https://twitter.com/ColorCloud2026)



ColorCloud



Elvira Cekrezi

Power Platform Developer,
Cambay Solutions
Albania



#ColorCloudSpeaker 🌈

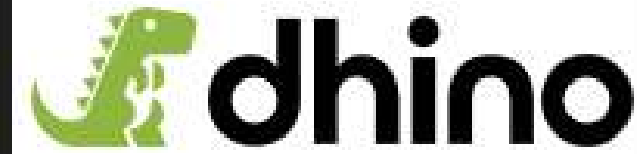
ColorCloud Sponsors

THANK YOU! 

Platinum



Gold



Room



Media



WIFI



Afterparty



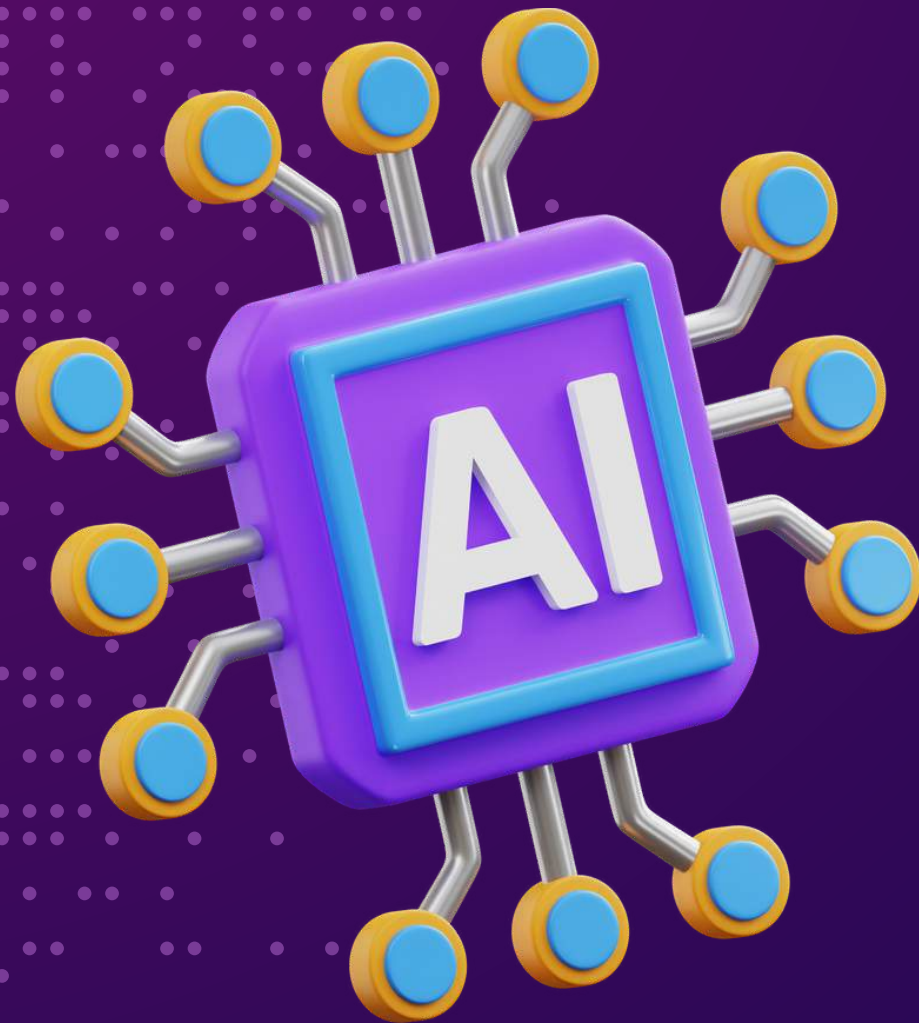
Silver



Digital

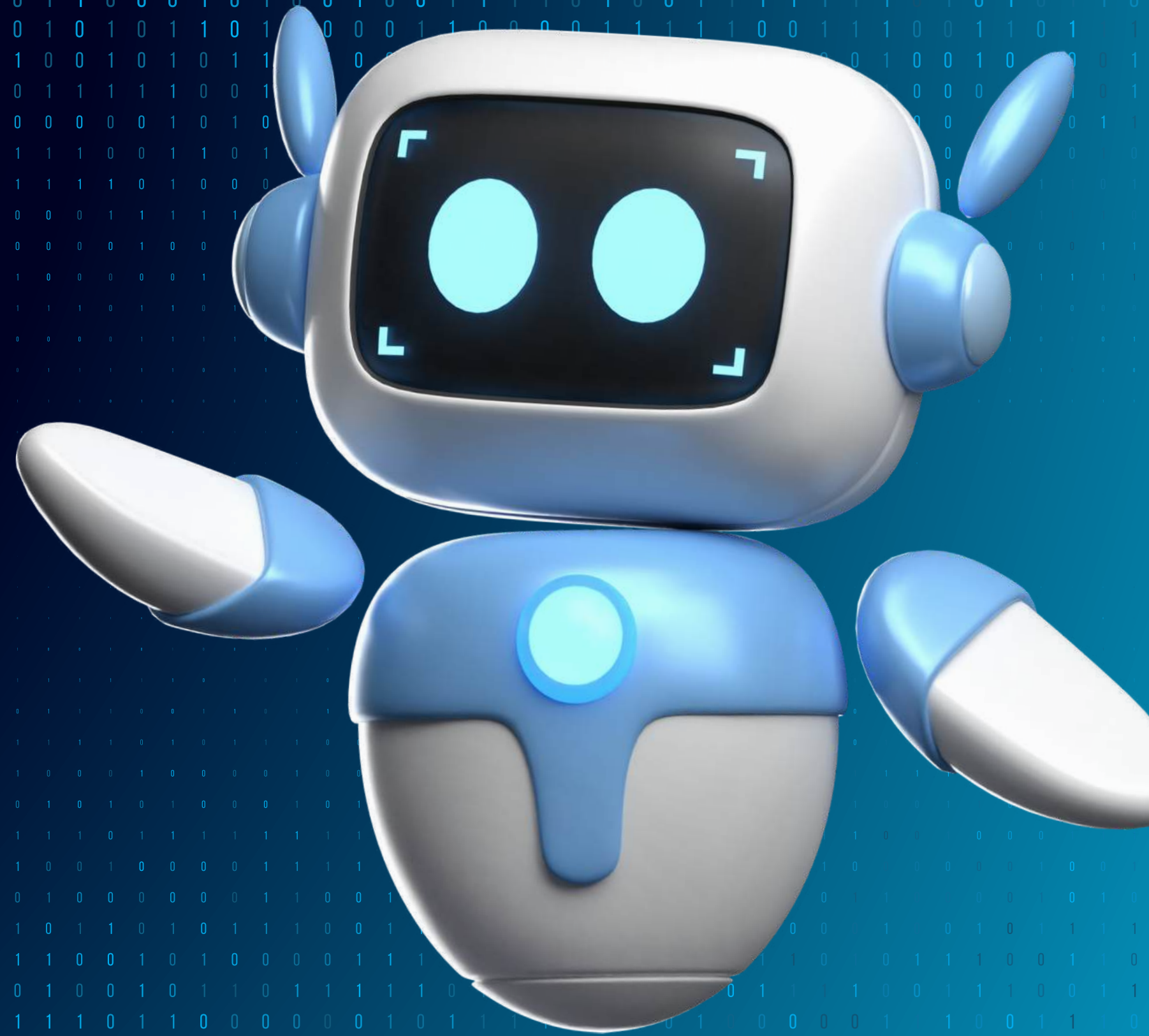


CONTENTS



- ① The shift happening in enterprise AI
- ② What Microsoft AI Foundry is
- ③ How it works (end-to-end flow)
- ④ Architecture overview
- ⑤ Key business problems today
- ⑥ Business impact
- ⑦ Demo
- ⑧ Closing vision

THE SHIFT
HAPPENING
RIGHT NOW



By 2026, 80% of enterprise software will include AI capabilities - Google

Then

VS

Now

- ✓ Isolated AI experiments for team
- ✓ Months to deploy a single model
- ✓ Data locked in separate systems
- ✓ High cost, low re-use

- ✓ Unified Platform for all teams
- ✓ Deploye agent in days not months
- ✓ Connected data across the org
- ✓ Reusable AI asset at enterprise scale

The Evolution to Microsoft Foundry

NOV 2023



Azure AI Studio

Originally Introduced

NOV 2024



Azure AI Foundry

Rebranded as

NOV 2025



Microsoft Foundry

Announced at **Microsoft Ignite**

November 18, 2025

WHAT IS MICROSOFT FOUNDRY?

An end-to-end platform for enterprises to discover, build, customize, and deploy AI agents and models - securely, at scale, and with full governance.



Model Catalog

Access a wide range of foundation models (OpenAI, open-source, and partner models) in one unified hub.



Agent Builder

Design and deploy AI agents that can reason, use tools, and automate real business workflows.



AI Safe & Gov

Built-in controls for responsible AI, including security, compliance, policy management, and data protection.



Observability

Monitor performance, cost, accuracy, and behavior of AI systems in real time for production reliability.

The AI Factory



AI MODELS

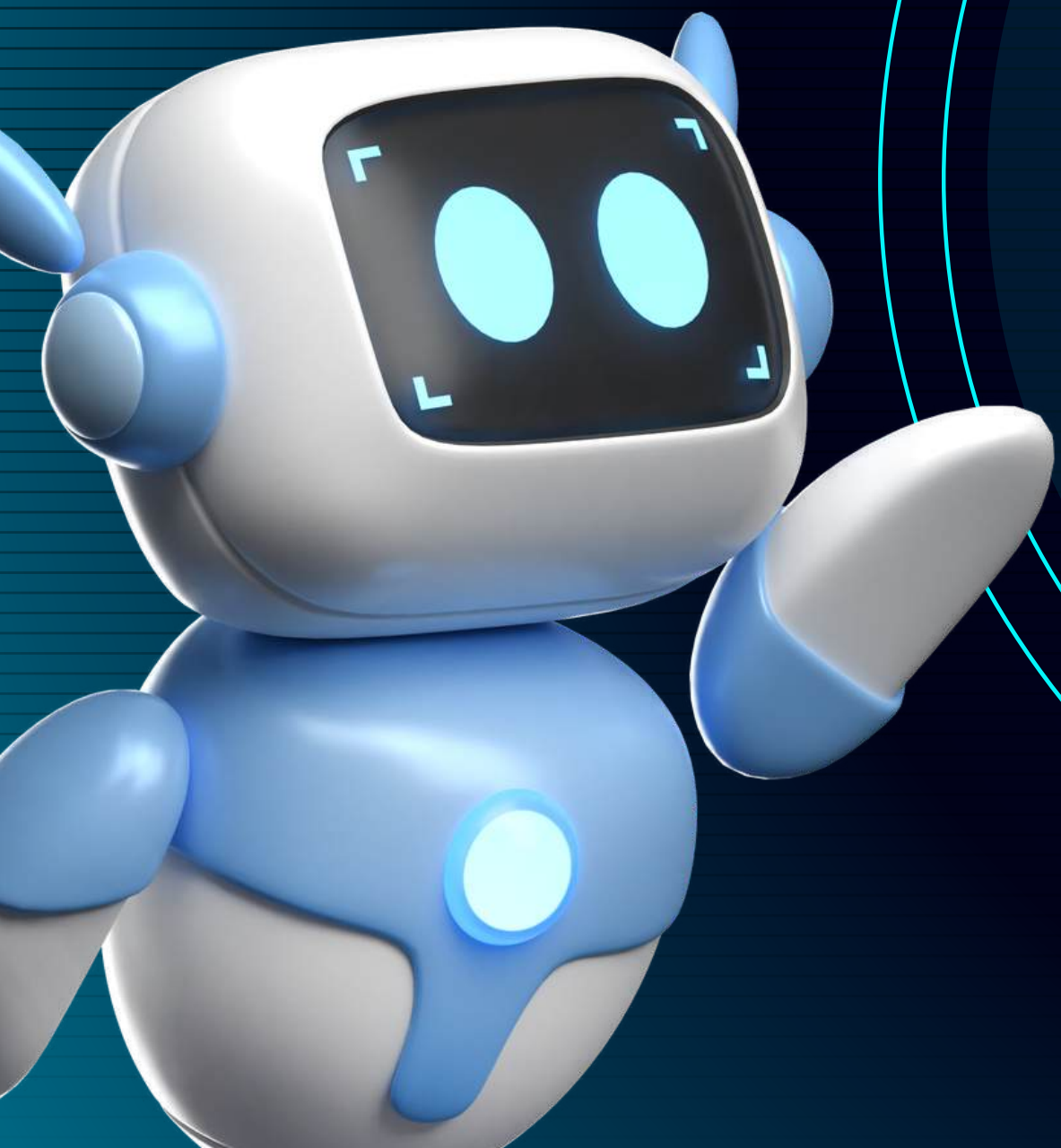
AI APPLICATIONS

MODELS
AS RAW MATERIALS

TOOLS
AS MACHINES

DEVELOPERS
AS ENGINEERS

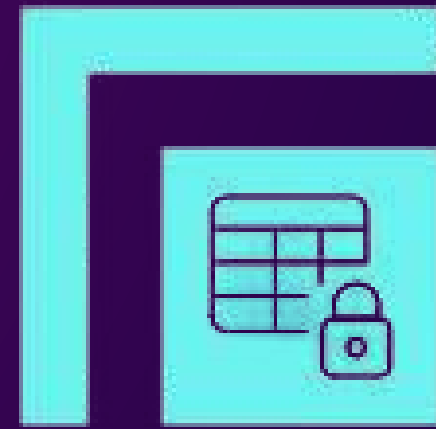
APPS
AS FINISHED PRODUCTS



HOW MICROSOFT FOUNDRY WORKS

Unified Platform

Centralized access to AI agents, models, and tools

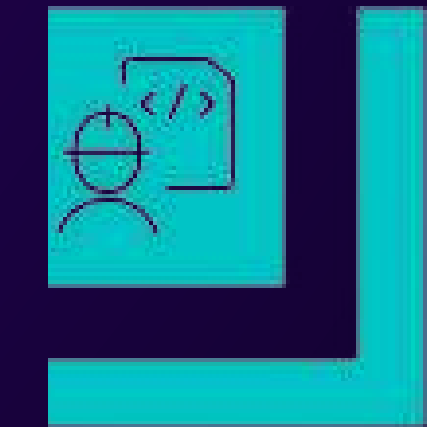
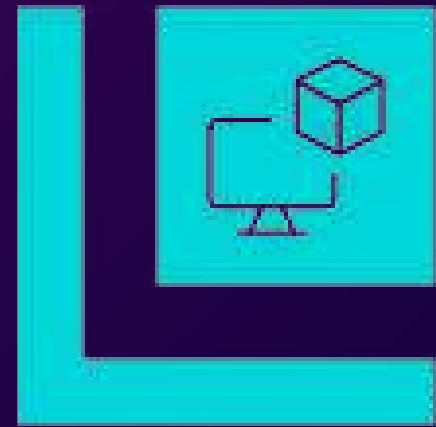


Production Grade Infrastructure

Making sure AI doesn't fail and gives consistent results.

Governance

Simplified management of access, networking and policies



Developer - Friendly Interfaces

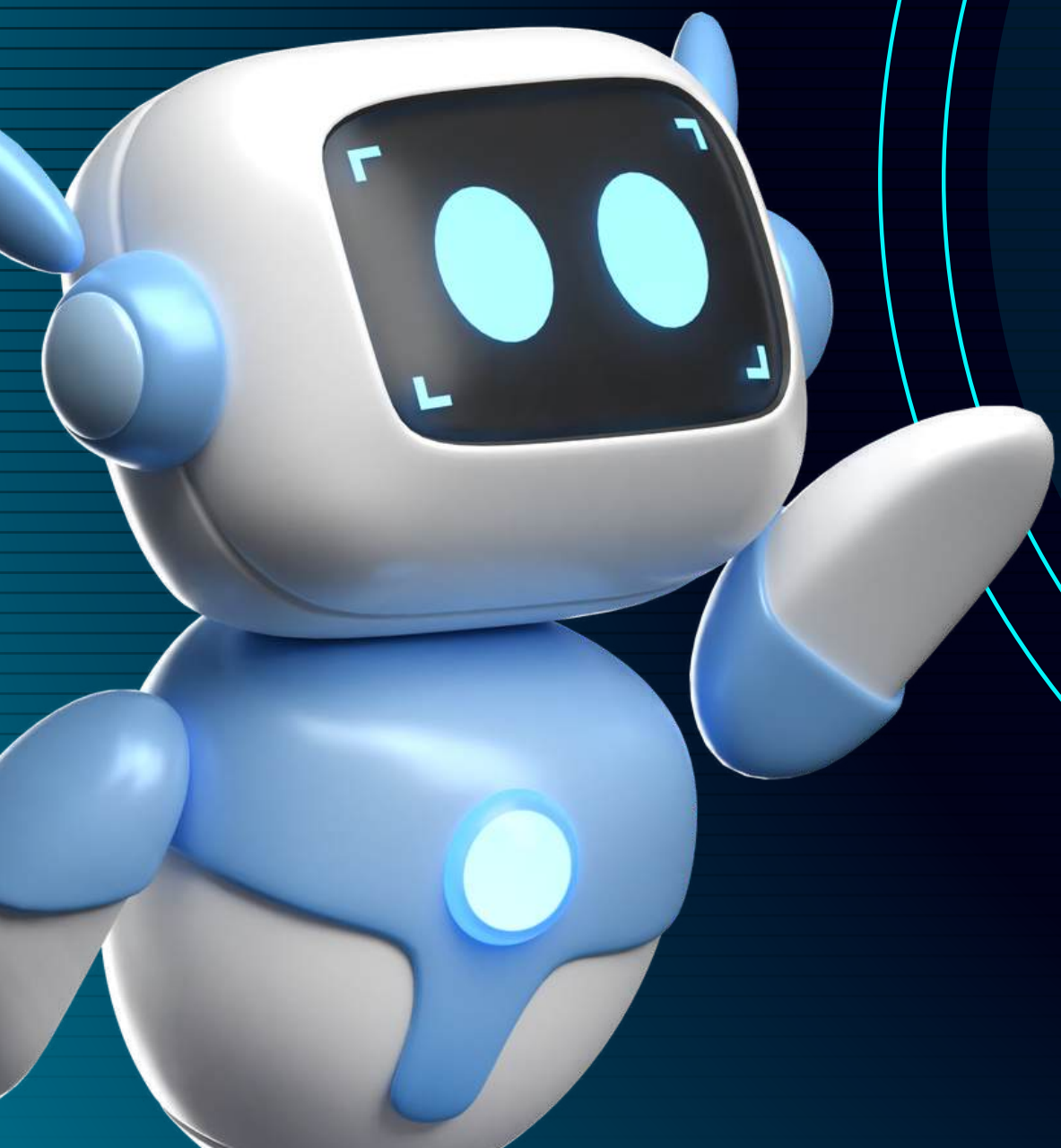
Intuitive tools empowering AI solution creation



ARCHITECTURE OVERVIEW

END TO END FLOW



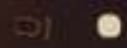


**BUSINESS
IMPACT
PROCESS**

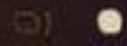
Problems



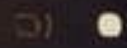
Too much data



Manual processes



Siloed systems



Slow decisions



Foundry Solutions



AI Models + RAG

➤ Turn raw data into meaningful insights



Automation & AI Agents

➤ Reduce manual work



Data Integration

➤ Connect CRM, documents, APIs



Real-Time Intelligence

➤ Faster, smarter decisions

REAL BUSINESS APPLICATIONS

HR



Employee Onboarding Agent

Answers policy questions, schedules training, provisions systems — reducing HR workload by 60%.

Finance



Invoice Processing Automation

Reads, validates, and routes invoices with 98% accuracy — cutting processing time from days to minutes.

Legal



Contract Review Assistant

Flags risk clauses and summarises contract terms in seconds, freeing lawyers for high-value work.

IT



Code Review & Dev Assistant

Integrated into dev pipelines to catch bugs, suggest improvements, and generate documentation.

Sales



Account Intelligence Agent

Surfaces CRM insights, next-best actions, and competitive intel before every customer call.

Ops



Supply Chain Monitor

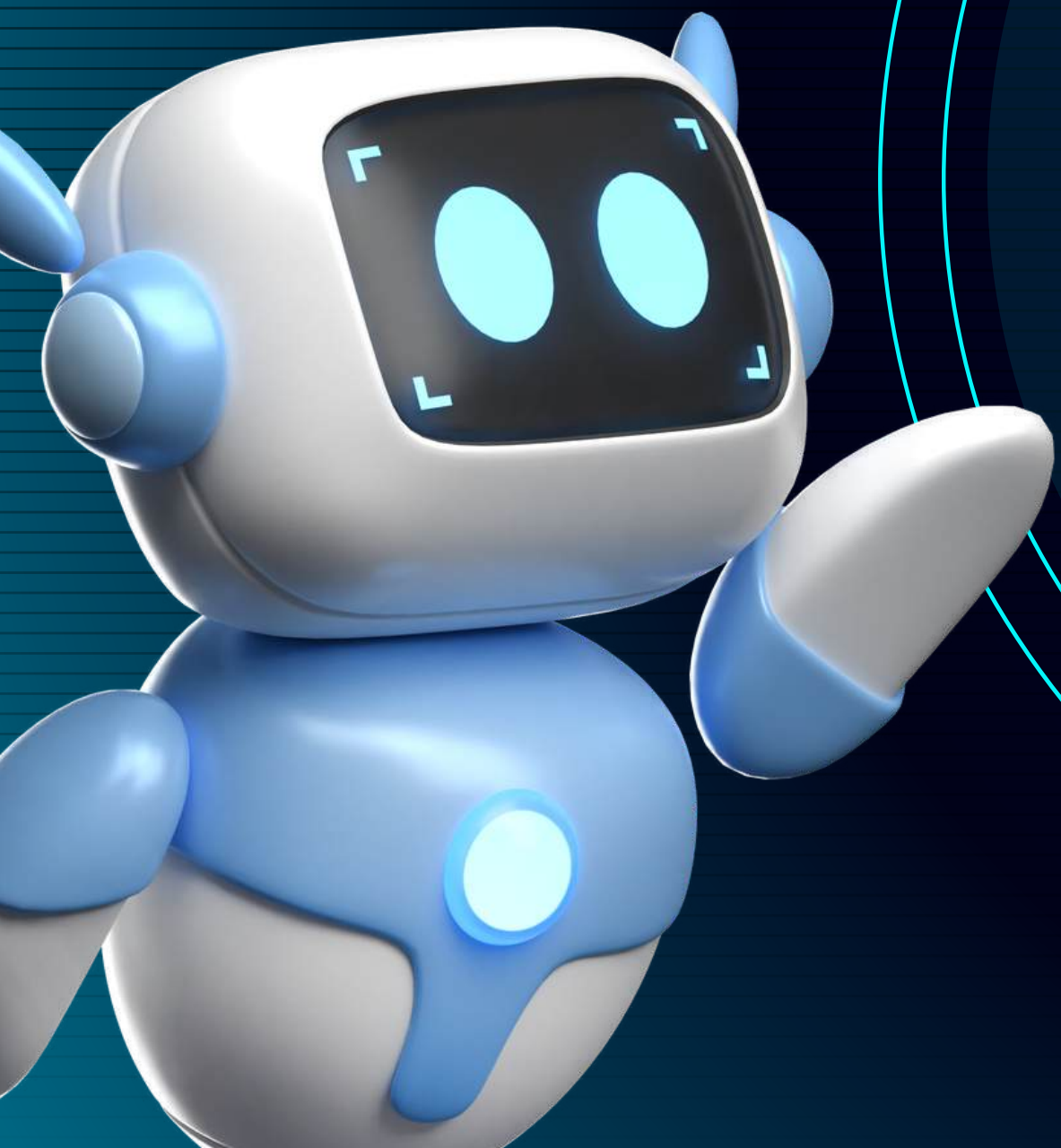
Monitors disruptions, predicts delays, and auto-escalates exceptions to the right stakeholders.



IT'S DEMO TIME

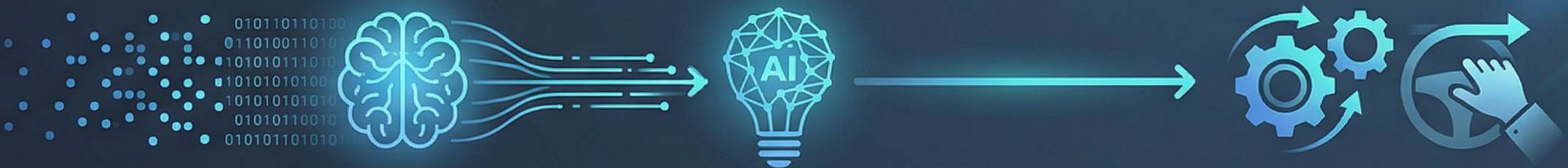
	Copilot Studio	Microsoft Foundry
Deployment context	Power Platform in use Native M365, Teams & Copilot channels	Azure / custom infra Full cloud-native deployment control
Development approach	Low-code / no-code Citizen devs, rapid delivery	Code-first, Visual Studio SDK, APIs, custom pipelines
Custom code required?	No — built-in connectors Limited custom logic	Yes — full code control Complex orchestration
Speed to deploy	Fast — Days not weeks	Longer setup — Scales better long-term
Governance & compliance	Inherited from M365 Auto DLP, RBAC, audit logs	Manual configuration More control, more setup





CLOSING
VISION

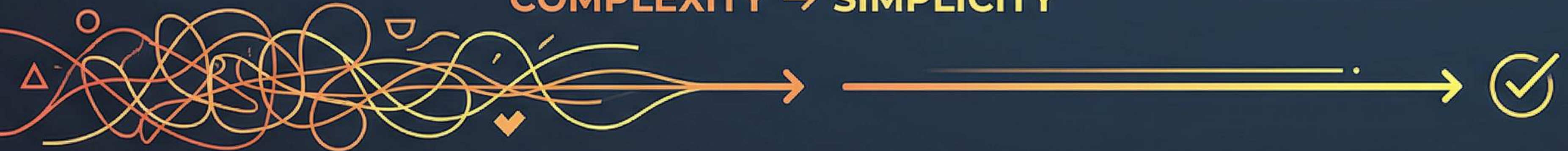
DATA → INTELLIGENCE → ACTION



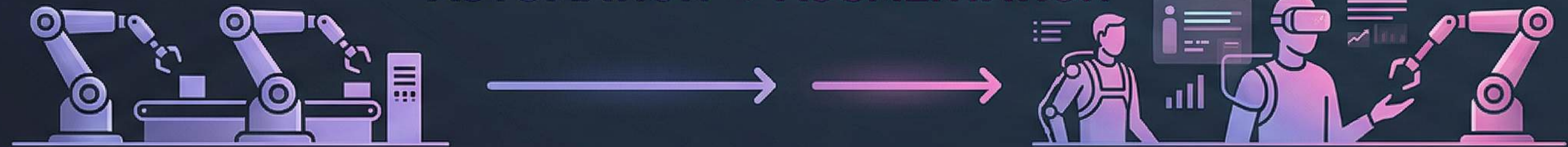
APPS → AGENTS → AUTONOMOUS SYSTEMS



COMPLEXITY → SIMPLICITY



AUTOMATION → AUGMENTATION



QUESTIONS?





THANK
YOU



I ASKED AI TO
GENERATE ME A
QUOTE. AND IT
RESPONDED
BACK: GO HOME, I
AM TIRED



ColorCloud

Feedback

Please rate my session to help us improve!

Scan the QR Code or go to the ColorCloud App and submit your feedback for the chosen session.